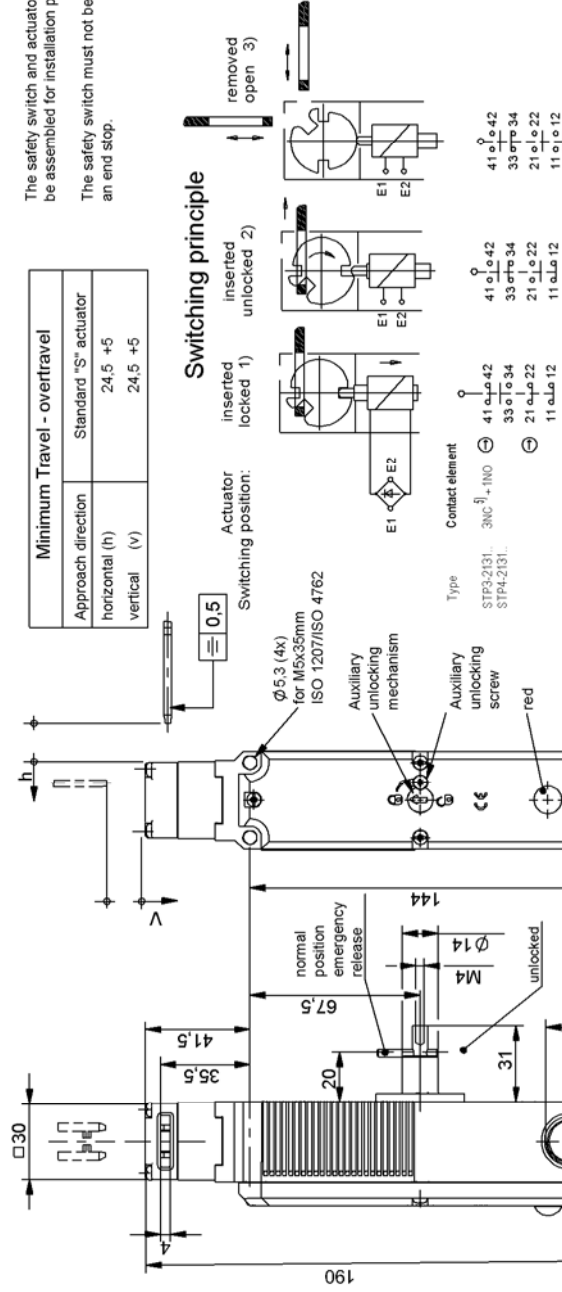
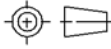


Maße in mm / Dimensions in mm



### Approach direction

The actuator head can be turned to be desired approach direction after undoing the fixing screws.

**Betätigter separat bestellen.**

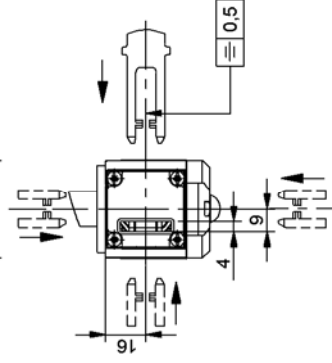


5) 2 direct opening NC + 1 delayed NC as door contact

When actuating the emergency release the door may not be under tractive forces.

When activating the escape release, the contacts 21-22 and 41-42 are interrupted and the switch is unlocked mechanically. The state of the contacts 1x-1x and 3x-3x may vary.

LED-Modul separate  
included.



Mount safety switch so that the emergency release can only be activated from the danger area.

The actuation of the escape release can be extended with a threaded rod M4.

**Attention:**

When locking and/ or unlocking the guard locking, only the contacts 21-22 and 41-42 are actuated. For applications with hazardous states (e.g. overtraveling movements)

**Setup:**

Close the safety guard. Unlock the guard locking and keep the safety guard closed. The machine must not be induced/initiated for start.

**Technical Data** Please observe the operating instructions (in case of disagreement between data sheet and operating instructions, the information of the data sheet are to be considered)

Parameters	Value	Unit
Housing material	Reinforced thermoplastic	
Degree of protection according to IEC 60529	IP 67	
Installation position	any	
Mechanical service life	1 x 10 <sup>6</sup>	Switching cycles
Ambient temperature	-20 ... +55	°C
Approach speed max.	20	m/min
Actuating- / extraction- / retention force	35 / 30 / 20	N
Locking force, F max.	2500	N
Locking force F <sub>zh</sub> (incl. safety margin acc. to GS-ET-19)	2000	N
Actuation frequency	1200	1/h
Locking methods	STP3: Mechanically locked, 1) unlocking by applying voltage up to position unlocked 2). Open 3) if actuator is removed.	
Actuator inserted:		
Weight		kg
Solenoid operating voltage	approx. 0.5	V
	AC/DC 48	V
Duty cycle	100	%
Connected load	8	W
Switching principle	Slowaction contact element	
Contact material	Silver alloy, gold flashed	
Type of connection	Screw terminal	
Conductor cross-section	0,34 ... 1,5	mm <sup>2</sup>
Rated insulation voltage U <sub>i</sub>	50	V
Rated impulse withstand voltage U <sub>imp</sub>	2,5	kV
Utilization category according to EN 60947-5-1	AC-15 4A 50V DC-13 4A 24V	
Switching voltage min. 10mA	12	V
Switching current min. at 24V	1	mA
Conventional thermal current I <sub>th</sub>	4	A
Short circuit protection (control circuit fuse)		A gG