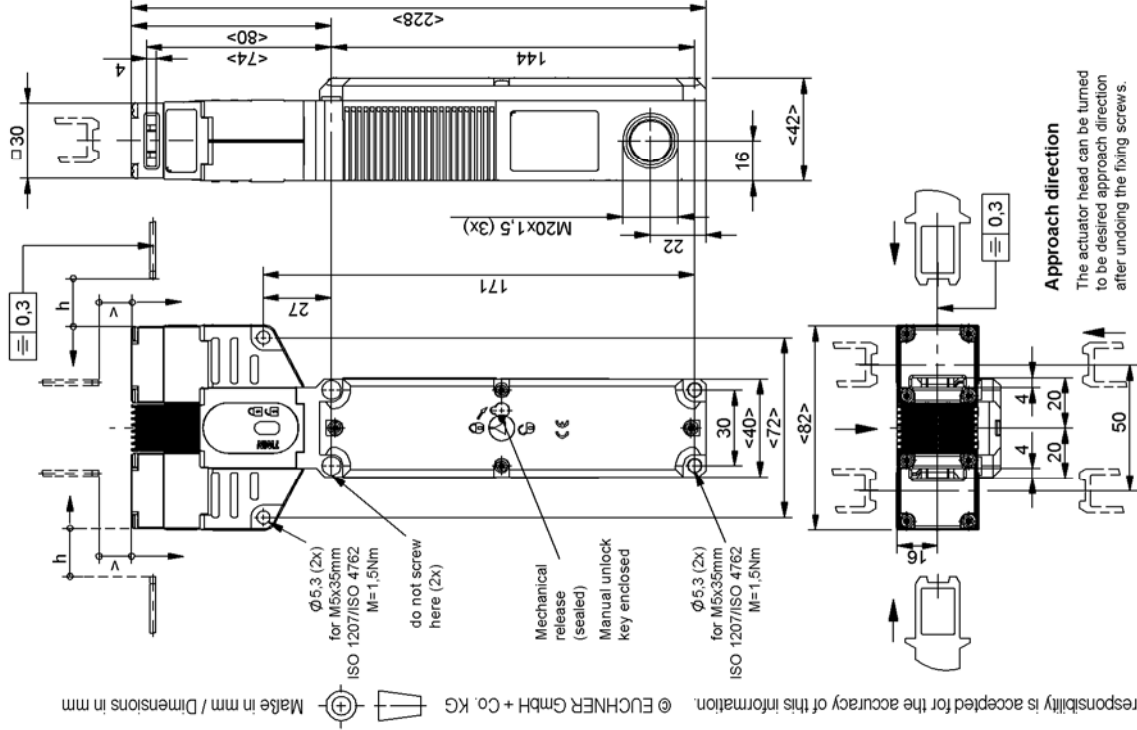


Maße in mm / Dimensions in mm



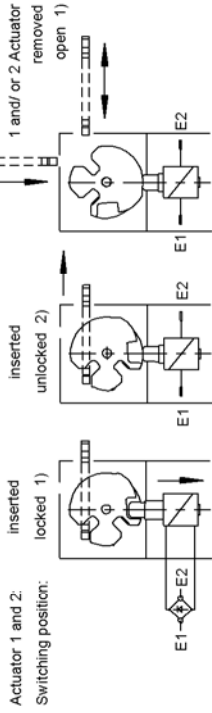
Please order actuator separately.

| Minimum Travel - overtravel |                   |
|-----------------------------|-------------------|
| Approach direction          | Standard actuator |
| horizontal (h)              | 24.5 +5           |
| vertical (v)                | 24.5 +5           |

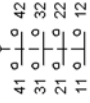
Attention:

To achieve the stated locking force, the mounting holes on the switch head must also be used.

Switching principle



Type  
STP-TW-3-4141...  
Contact element  
4NC



Attention:

When locking and/or unlocking the guard locking, only the contacts 21-22 and 41-42 are actuated. For applications with hazardous states (e.g. overtraveling movements), the contacts 21-22 and/or 41-42 always have to be integrated in the safety circuit.

Mechanical release:

In case of malfunctions, the guard locking can be deactivated using the mechanical release. Insert triangular key in the release on the switch and turn 180° to the released position.

Setup:

Close the safety guard. Unlock the guard locking and keep the safety guard closed. The machine must not be induced/initiated for start.



Always turn triangular key to the related stop! If the key is not turned to the stop, incorrect switching or even damage to the safety switch may result.

Technical Data Please observe the operating instructions (in case of disagreement between data sheet and operating instructions, the information of the data sheet are to be considered)

| Parameters   | Value                       | Unit             |
|--|-----------------------------|------------------|
| Reinforced thermoplastic   |                             |                  |
| Housing material   | IP 67                       |                  |
| Degree of protection according to IEC 60529                          | any                         |                  |
| Installation position  | 1 x 10°                     | Switching cycles |
| Mechanical service life  | -20 ... +55                 | °C               |
| Ambient temperature  | 20                          | m/min            |
| Approach speed max.  | 35 / 30 / 20                | N                |
| Actuating- / extraction- / retention force                           | 2500                        | N                |
| Locking force, F max.  | 2000                        | N                |
| Locking force F <sub>zh</sub> (incl. safety margin acc. to GS-ET-19) | 1200                        | 1/h              |
| Actuation frequency  |                             |                  |
| Locking methods  |                             |                  |
| Actuator inserted:   |                             |                  |
| Weight   |                             | kg               |
| Solenoid operating voltage   | approx. 0.6                 | V                |
|  | AC/DC 24                    | %                |
| Duty cycle   | 100                         | W                |
| Connected load   | 8                           |                  |
| Switching principle  |                             |                  |
| Contact material   | Slow action contact element |                  |
| Type of connection   | Silver alloy, gold flashed  |                  |
| Conductor cross-section  | Screw terminal              |                  |
| Rated insulation voltage U <sub>i</sub>                              | 0.34 ... 1.5                | mm²              |
| Rated impulse withstand voltage U <sub>imp</sub>                     | 250                         | V                |
| Utilization category according to EN 60947-5-1                       | 2.5                         | kV               |
| Switching voltage min. 10mA  | AC-15 4A 230V               |                  |
| Switching current min. at 24V  | DC-13 4A 24V                |                  |
| Conventional thermal current I <sub>th</sub>                         | 12                          | V                |
| Short circuit protection (control circuit fuse)                      | 1                           | mA               |
|  | 4                           | A                |
|  | 4                           | A gG             |