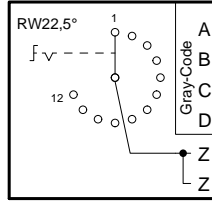


Technische Änderungen vorbehalten, alle Angaben ohne Gewähr / Subject to technical modifications; no responsibility is accepted for the accuracy of this information. © EUCHNER GmbH + Co. KG



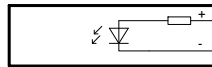
S1	DCBA	
1	0000	1
2	0001	2
3	0011	3
4	0010	4
5	0110	5
6	0111	6
7	0101	7
8	0100	8
9	1100	9
10	1101	10
11	1111	11
12	1110	12

S1
Stufenschalter
12 Stellungen
selector switch
12 positions



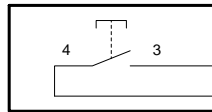
LP2	WH	ws	
LP1	BN	br	
LP3	GN	gn	
LP4	YE	ge	
LP5	+24V	GY	gr
LP6			

P1
LED gelb
LED yellow



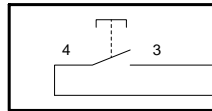
0V	PK	rs
	GYPK	grrs

S2 "+"
Drucktaste
push button



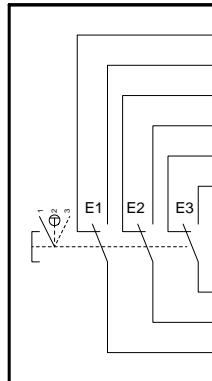
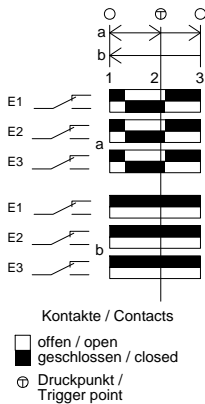
	RDBU	rtbl
	GNWH	wsgn

S3 "-"
Drucktaste
push button



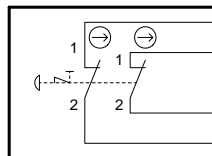
	BNGN	brgn
	YEWH	wsge

S4
Zustimmtaster
enabling push button



LP1		
LP2	BNYE	gebr
LP10		
LP9	GYWH	wsgr
LP11		
LP12	BNGY	grbr
LP13	WHPK	wsrs
LP8	BNPK	rsbr
LP5	BUWH	wsbl

S5
NOT-HALT
emergency-stop



	BU	bl
	RD	rt
	BK	sw
	VT	vi

Adern
nicht angeschlossen/
wires
not connected:

	BNBU	brbl
	RDWH	wsrt

Schirm / shield

Adern / wires 23x 0,14²