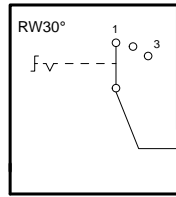


Technische Änderungen vorbehalten, alle Angaben ohne Gewähr / Subject to technical modifications; no responsibility is accepted for the accuracy of this information. © EUCHNER GmbH + Co. KG

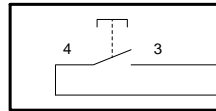


S1
Stufenschalter
3 Stellungen
selector switch
3 positions



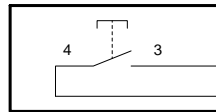
LP1 GNWH wsgn
LP2
LP3 GYWH wsgr
LP13 +24V VT vi
LP14 Z

S2 "+"
Drucktaste
push button



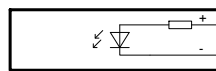
BK sw

S3 "-"
Drucktaste
push button



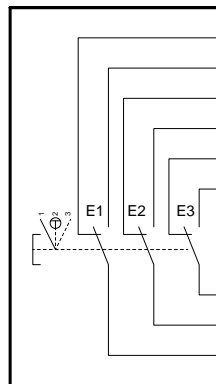
GYPK grrs

P1
LED gelb
LED yellow



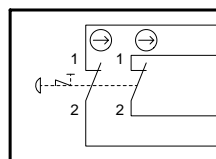
+24V YEWH wsge
0V BNYE gebr

S4
Zustimmtaster
enabling push button

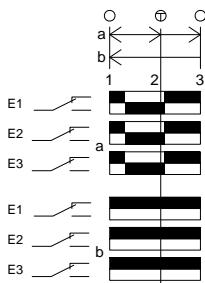


LP1 RDBU rtbl
LP2
LP10
LP9 PK rs
LP11 GY gr
LP12
LP13 WH ws
LP8 BN br
LP5 BNGN brgn

S5
NOT-HALT
emergency stop



RD rt
GN gn
BU bl
YE ge



Kontakte / Contacts
□ offen / open
■ geschlossen / closed
⊕ Druckpunkt / Trigger point

Adern nicht angeschlossen/
wires not connected

BNGY grbr
WHPK wsrs
BNPK rsbr
BUWH wsbl
BNBU brbl
RDWH wsrt
Schirm / shield

Adern 0,14mm² / wires 0,14mm²