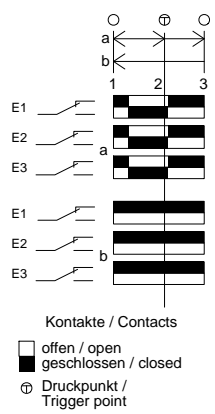
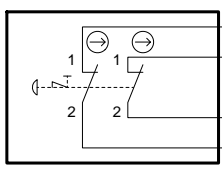


Technische Änderungen vorbehalten, alle Angaben ohne Gewähr / Subject to technical modifications; no responsibility is accepted for the accuracy of this information. © EUCHNER GmbH + Co. KG Maße in mm / Dimensions in mm

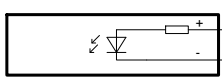


S1
 NOT-HALT
 emergency stop



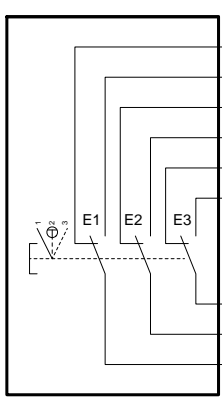
WH	ws	1
BK	sw	9
VT	vi	10
BN	br	2

P1
 LED grün
 LED green



RD	rt	8
RDBU	rtbl	12
0V		

S2
 Zustimmungstaster
 enabling push button



LP1			
LP2			
LP10			
LP9	PK	rs	6
LP11			
LP12	YE	ge	4
LP13	GN	gn	3
LP8	GY	gr	5
LP5			

Adern und Pins
 nicht angeschlossen/
 wires and pins
 not connected

BU	bl	7
GYPK	grs	11

Schirm / shield

Adern / wires: 12x 0,14mm²

Steckverbinder / connector:
 Phoenix 12pol.