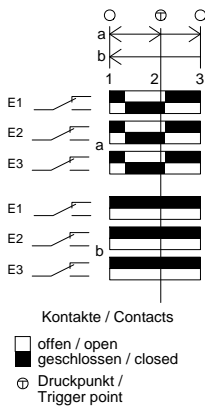
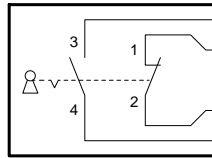


Technische Änderungen vorbehalten, alle Angaben ohne Gewähr / Subject to technical modifications; no responsibility is accepted for the accuracy of this information. © EUCHNER GmbH + Co. KG

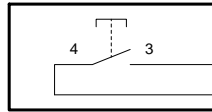


S1
Schlüsselschalter
key switch



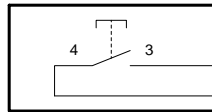
GNWH wsgn
+24V BNGN brgn

S2 "+"
Drucktaste
push button



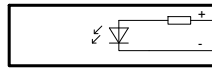
+24V BK sw
VT vi

S3 "-"
Drucktaste
push button



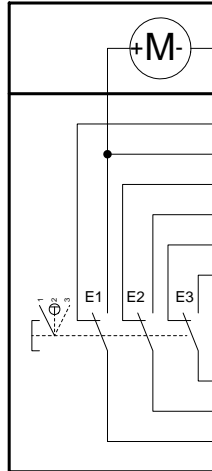
GYPK grss

P1
LED gelb
LED yellow



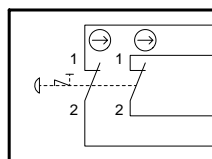
0V BNYE gebr

S4
Zustimmtaster
enabling push button



0V LP3 RDBU rtbl
LP1
LP2
LP10
LP9 PK rs
LP11 GY gr
LP12
LP13 WH ws
LP8 BN br
LP5 +24V YEWH wsge

S5
NOT-HALT
emergency-stop



RD rt
GN gn
BU bl
YE ge

Adern
nicht angeschlossen/
wires
not connected:

GYWH wsgr
BNGY grbr
WHPK wsrs
BNPK rsbr
BUWH wsbl
BNBU brbl
RDWH wsrt

Schirm / shield

Adern / wires: 23x 0,14mm²