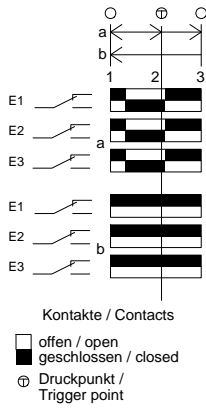
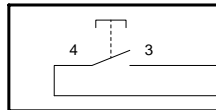


Technische Änderungen vorbehalten, alle Angaben ohne Gewähr / Subject to technical modifications; no responsibility is accepted for the accuracy of this information. © EUCHNER GmbH + Co. KG - Maße in mm / Dimensions in mm

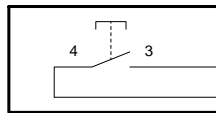


S1
 Taste schwarz
 push button black



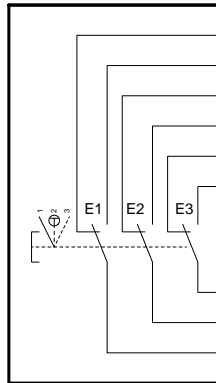
PK rs
 VT vi

S2
 Taste grün
 push button green



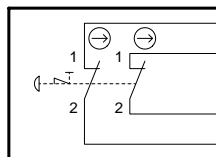
RD rt
 YE ge

S3
 Zustimmungstaster
 enabling push button



LP1
 LP2
 LP10
 LP9
 LP11
 LP12
 LP13
 LP8
 LP5
 BN br
 BU bl
 GN gn
 BK sw

S4
 NOT-HALT
 emergency stop



GY gr
 GYPK grrs
 RDBU rtbl
 WH ws

Schirm / shield
 Adern / wires: 12x 0,14mm²