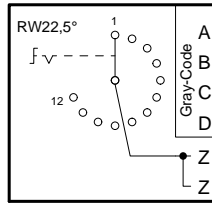


Technische Änderungen vorbehalten, alle Angaben ohne Gewähr / Subject to technical modifications; no responsibility is accepted for the accuracy of this information. © EUCHNER GmbH + Co. KG

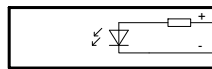


S1	DCBA
1	0000
2	0001
3	0011
4	0010
5	0110
6	0111
7	0101
8	0100
9	1100
10	1101
11	1111
12	1110

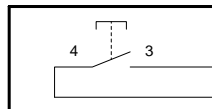
**S1**  
Stufenschalter  
12 Stellungen  
selector switch  
12 positions



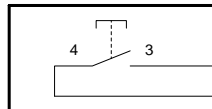
**P1**  
LED gelb  
LED yellow



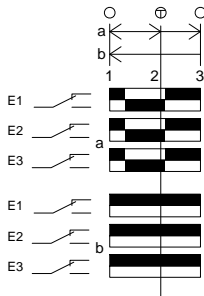
**S2**  
Drucktaste "+"  
push button "+"



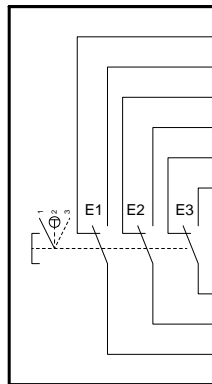
**S3**  
Drucktaste "-"  
push button "-"



**S4**  
Zustimmtaster  
enabling push button



Kontakte / Contacts  
 □ offen / open  
 ■ geschlossen / closed  
 ⊕ Druckpunkt / Trigger point



Stift und Adern  
nicht angeschlossen/  
pin and wires  
not connected:

- BNGY grbr 12
- BNGN brgn
- GYWH wsgr
- YEWH wsge
- BNBU brbl
- WHPK wsrs
- BNPK rsbr

Leitung / cable  
23x0,14mm<sup>2</sup>  
Steckverbinder / Connector:  
Coninvers 17pol.