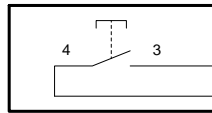


Technische Änderungen vorbehalten, alle Angaben ohne Gewähr / Subject to technical modifications; no responsibility is accepted for the accuracy of this information. © EUCHNER GmbH + Co. KG - Maße in mm / Dimensions in mm

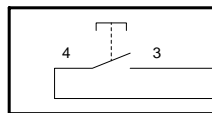


S1 "+"  
Drucktaste  
push button



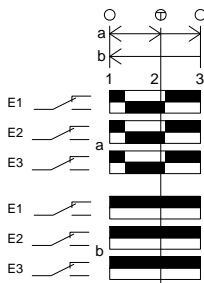
GYPK grrs  
BK sw

S2 "-"  
Drucktaste  
push button

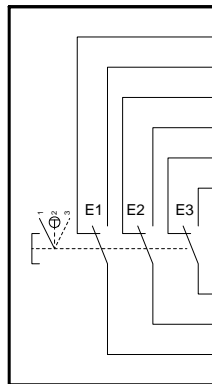


RDBU rtbl  
VT vi

S3  
Zustimmtaster  
enabling push button



Kontakte / Contacts  
 offen / open  
 geschlossen / closed  
 ⊕ Druckpunkt / Trigger point



LP1  
LP2  
LP10  
LP9  
LP11  
LP12  
LP13  
LP8  
LP5

YE ge 0,5 mm<sup>2</sup>  
GN gn 0,5 mm<sup>2</sup>  
WH ws 0,5 mm<sup>2</sup>  
BN br 0,5 mm<sup>2</sup>

Adern  
nicht angeschlossen/  
wires  
not connected:

GY gr 0,5 mm<sup>2</sup>  
PK rs 0,5 mm<sup>2</sup>  
BU bl 0,5 mm<sup>2</sup>  
RD rt 0,5 mm<sup>2</sup>  
GNWH gnws  
BNGN brgn  
YEWH wsge  
BNYSE gebr

Schirm / shield

nicht gekennzeichnete Adern 0.14 mm<sup>2</sup> /  
wires without markings are 0.14 mm<sup>2</sup>